



Fluoro Automotive Plast Private Limited

(Under One Roof For All Sealing Solutions)

Assured Quality | Reliability | Customer Satisfaction



Manufacturers of

PTFE, VICTREX® PEEK, PCTFE, PVDF, PFA & all Engineering Polymer Components

www.fluoroapl.com

Delivering Quality & Globally

PTFE / PFA COMPONENTS



Ball Valve Seat



General Components



PTFE / PFA Plug Valve Sleeves



PTFE Butterfly Valve Seat



PTFE Diaphragms & Balls

Exceptional chemical & thermal resistance, low permeability, reduced deformation under load, High creep resistance & dimensional stability, exceptionally smooth surfaces.

Available Grades

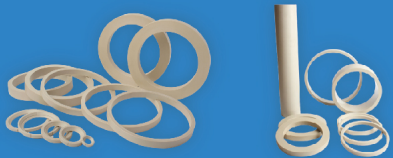
PTFE, Modified PTFE, Glass Filled, Carbon Filled, Moly Filled, Bronze Filled, Graphite Filled & Specified Grades by Customer with ranges upto 36".

Main characteristics of PFA

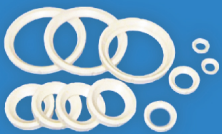
- Very high service temperature up to 260°C
- Excellent chemical and heat resistance
- Very high toughness and impact strength
- Excellent weatherability and release properties
- Very good electrical insulating and dielectrical properties
- Excellent stress crack resistance
- Co-efficient fraction
- Smooth surface



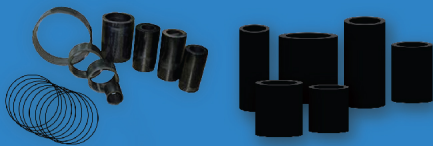
PEEK 450G Tube



PEEK Hydraulic & Pneumatic Seals



PEEK Ball Valve Seat



450 Filled Grade PEEK Thrust Washers, Bearings, Stem Bushings

VICTREX® PEEK 450G - VIRGIN

- Excellent strength, stiffness and dimensional stability temperature and harsh environment.
- Easy to process and lightweight compared to steel, aluminum and titanium.
- Low co-efficient of friction and high wear resistance without lubrication.
- Chemically resistant and insoluble in common solvents including acids, salts and oil.
- Features low out gassing, low particle generation and inherent purity for reduced contamination.

VICTREX PEEK Grades

450G, 450CA30, 450FC30, 450FE20, 450FG30, 450GL30

PEEK Tube Manufacturing Range

DIA - FROM 25 TO 1000 MM

Applications

Valve Seats & Seals, Thrust Washers, Thrust Bearing, Stem Bushings, Gaskets, Seal Rings Transmission Components and other specified components by Customer.

Metal Seats (Inconel, SS316, SS304)

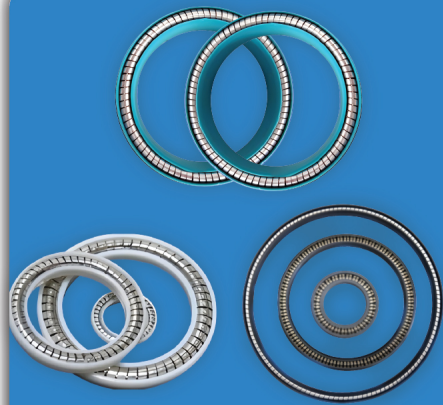
Range of Valve Seats upto 36"

Inserts Material

PTFE, VICTREX® PEEK, PCTFE, PVDF, PFA & Devlon and other specified material by Customer.



Metal Seats



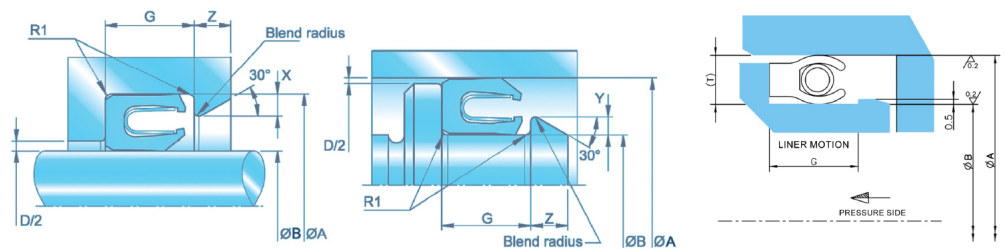
Spring Energized Lip Seal

Groove Dimensions

Nominal Cross Section	A mm		B mm	
	From	To	From	To
1/16"	6	1000	3	900
3/32"	10	1000	4	900
1/8"	15	1000	6	900
3/16"	20	1000	12	900
1/4"	35	1000	20	900
3/8"	50	1000	25	900

SPRING ENERGIZED LIP SEAL

Spring Energized PTFE Lip Seals are useful for high or low temperatures, high pressures, high speeds and extremely corrosive environments. They are also used in applications requiring very low friction.



Spring Materials

ELGILOY / PHYNOX, HASTELLOY C276, SS301, SS302, SS304, SS316, Inconel

Lip Seal Materials (Jacket)

PTFE - Virgin, PTFE - Virgin Modified, PTFE - Reinforced with Carbon and Graphite, PTFE - Filled with Glass Fiber and MoS₂, PTFE - Reinforced with Special Filler, UHMW - PE Modified, EKONOL - PTFE, PEEK and PCTFE

Spring Type

Helical, Cantilevered V Spring, Cantilevered U Spring

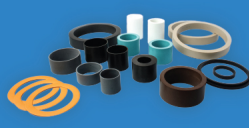


PTFE Piston Seal,
Backup Ring,
Guide Ring

High Pressure
Piston Seals



PTFE
Transmission
Seals



Hydraulic Seals

Hydraulic Seals

Fluoro manufactures a wide range of seal options with differing fluid and temperature thresholds, surface speeds and pressures.

Ranges up to 1000 mm

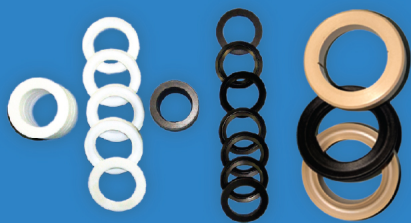
Available Grades

PTFE & Modified PTFE, Glass Filled, Carbon Filled, Moly Filled, Bronze Filled, Graphite Filled & Specified by Customer



Polyamide N9010

- Increases component life
- Extends life of mating parts
- Cost effective
- Not require special fitting tools
- Lightweight and easy handling

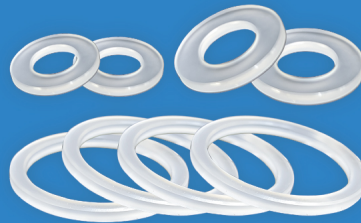


Chevron Packing Set

Chevron Packing is used for hydraulic, pneumatic cylinder, higher pressure pumps and valve stem packing.

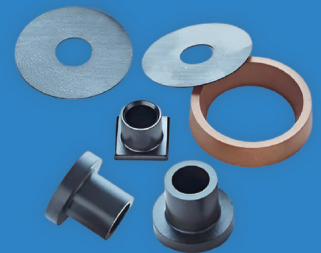
Available Grades

PTFE, PEEK, Modified (TFM) PTFE



PCTFE

PCTFE has high mechanical strength and a shrinkage rate at low temperatures, it is widely used for low-temperature machineries, equipment etc.



DUPONT™ VESPEL® Seals

Attributes

- Low coefficient of friction
- Wide range of temperature capabilities upto 500°F/ 288°C and above
- High mechanical strength

Applications Thrust washers, Seal rings, Valve Seats, Bearings, Seals



Fluoro Automotive Plast Private Limited

About Us

Established in 1996 at Chennai, the gateway of South India has scaled newer heights in manufacturing and supplying of Industrial Seals over the years.

Contact Us



+91-94442 34462
+91-95510 06669



044 - 27441147



info@fluoroapl.com



www.fluoroapl.com

Locate Us

#32, Pillaiyar Koil Street,
Chinna Kayar, Kayar RF,
Thiruporur - 603110,
Tamil Nadu, India.

Location

Scan QR



Sectors We Serve



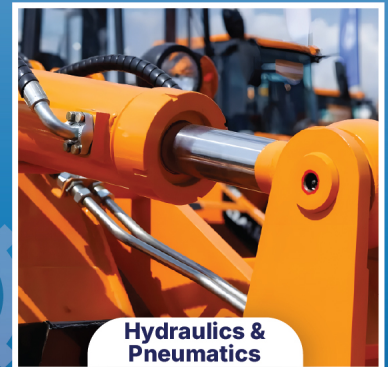
Automotive



Valve & Pump



Oil & Gas



Hydraulics & Pneumatics



Defence



Aerospace



Wind Energy



Agriculture

Fluoro Automotive Plast Private Limited

(Under One Roof For All Sealing Solutions)